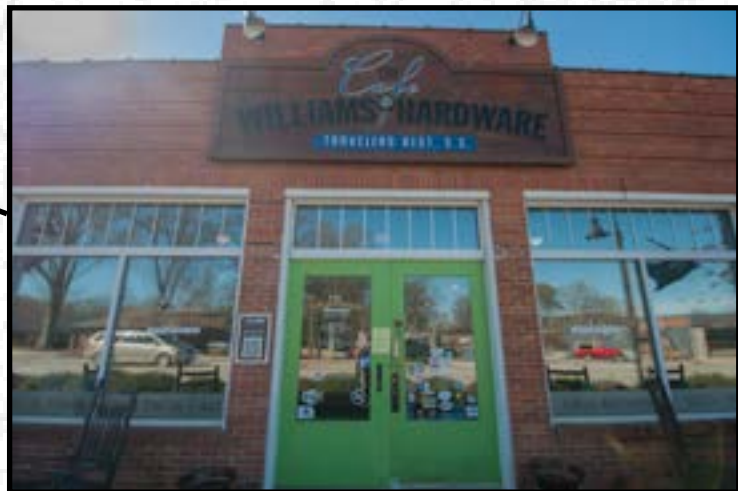
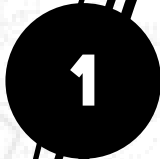


SWAMP RABBIT TRAIL

The Swamp Rabbit Trail is a 13.5-mile biking, walking or running trail that runs from Travelers Rest in the north down through downtown Greenville. The trail begins at Tate Road in Travelers Rest and ends near Lake Conestee Park. The trail was a railway for more than 100 years before becoming a trail operated by Greenville Recreation in 2009.

For those who need to rent a bike for the trail, several shops are available depending on where you begin your ride. Sunrift Adventures is located at 1 Center St. in Travelers Rest. In downtown Greenville, Reedy Rides is available at 12 W. McBee Ave. TTR Ride Center, near the Swamp Rabbit Café and Grocery, is located at 205 Cedar Lane Road.

Parking for the trail can be found at many locations including the Travelers Rest city parking lot, Furman University, the Swamp Rabbit Café and Cleveland Park.



The Café at Williams Hardware

The Café at Williams Hardware is a Greenville area favorite and a dining experience filled with Southern charm. Once a hardware store in downtown Travelers Rest, the store is now an old-fashioned café serving breakfast Saturday and Sunday and lunch daily. The café serves sandwiches, soups and salads and has bike racks available for those riding the trail. The store also sells items unique to the area including “If you can’t see Paris Mountain, you’re too far from home” apparel and décor. For more information and store hours visit www.cafeatwilliamshardware.com.



Swamp Rabbit Café

The Swamp Rabbit Café and Grocery, established along the trail in 2011, is a restaurant and store committed to local and organic produce. Founded by biologist Jacqueline Oliver and engineer Mary Walsh, the Swamp Rabbit Café serves bakery items, soups, sandwiches and prepared coffee drinks. The grocery offers produce from over 200 local farms that ensure fresh produce and organic products. The Swamp Rabbit Café has become a trail and Greenville icon that even includes an outdoor play area for children. For more information about the café and grocery visit www.swamprabbitcafe.com.



Cleveland Park

Cleveland Park is home to sports facilities, a nature trail and the Greenville Zoo. Along the trail following the Reedy River, Cleveland Park offers beautiful scenery and a chance to take a break from the trail to relax or visit the zoo. A trip through the zoo can be done in under two hours, viewing over 300 animals from around the world. The park also offers picnic shelters and an island gazebo ideal for an outdoor lunch on the trail. For more information about the Greenville zoo visit www.greenvillezoo.com.



Falls Park on the Reedy

Falls Park on the Reedy is in the heart of downtown Greenville. The well-known park features waterfalls, and other beautiful scenery is considered a must see in the Greenville area. With much nearby parking, Falls Park is an excellent place to start the trail or a beautiful place to rest while visiting local shops and venues on Main Street.